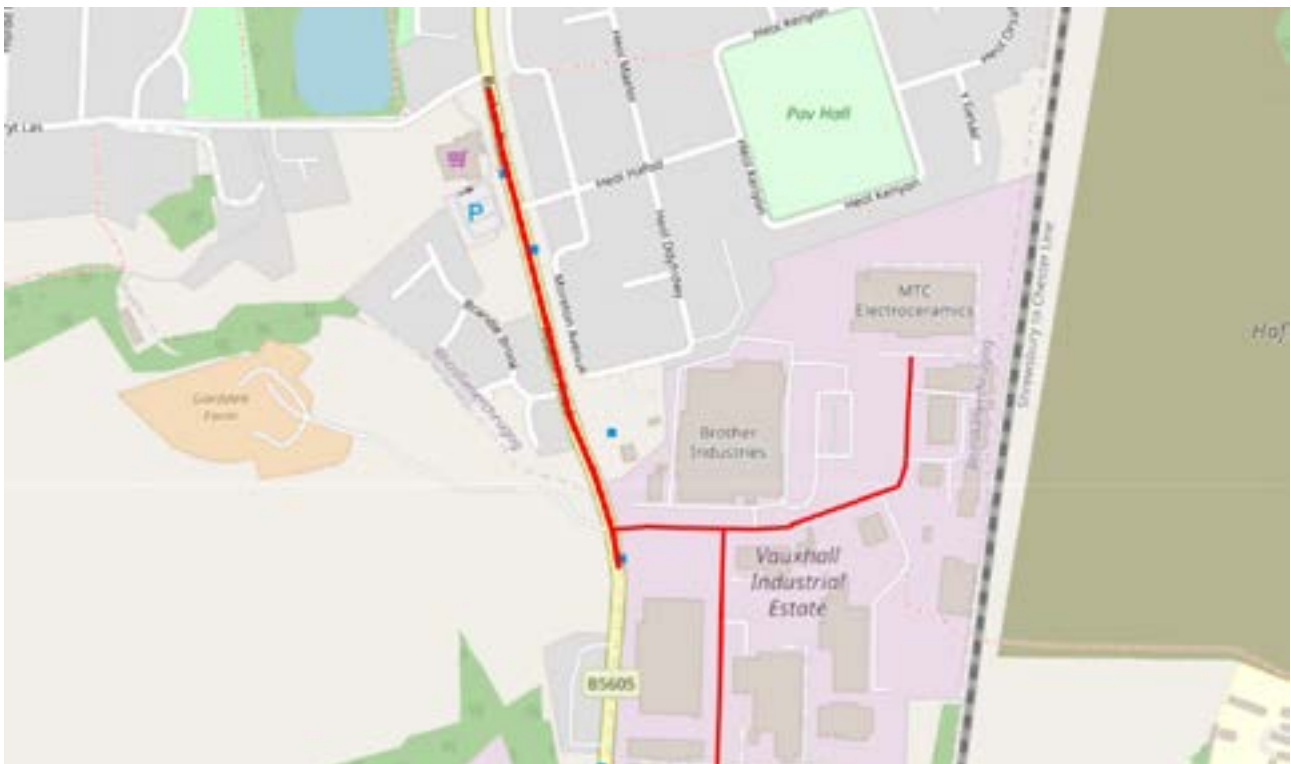


The County Borough of Wrexham (Welsh Government 30mph Scheme, Various Locations) (30 mph) Speed Limit) Order 2025

B5605 Ruabon Road, Johnstown



Map showing the proposed section to revert to 30mph

The highlighted section is proposed to revert to 30mph.

B5605 Ruabon Road, Johnstown (including Vauxhall Industrial Estate)

From a point 16m south of its junction with Stryt Las, to a point 42m south of its junction for Vauxhall Industrial Estate, a distance of 484m.

Vauxhall Industrial Estate, Johnstown - Its entire length.