



Wrexham County Borough Council

Welsh Language Impact Assessment and Supporting Evidence

Prepared in accordance with Welsh Language Standards 88-92

This Welsh Language Impact Assessment underpins the Council's proposal to change the status of Ysgol Cae'r Gwenyn from a mainstream nursery school to a primary special school and change the age range from 3-4 to 3-7 with effect from September 2025.

August 2024

Introduction

Wrexham County Borough Council's School Organisation Framework (2017-2025) sets out the Council's vision and strategic direction for developments in education provision over a 10 year period.

At Executive Board on 12 November 2024, Wrexham County Borough Council will seek approval to carry out a formal consultation with stakeholders on a proposal change the status of Ysgol Cae'r Gwenyn from a mainstream nursery school to a primary special school and change the age range from 3-4 to 3-7 with effect from September 2025. The proposal seeks to address the rising demand for specialist school places for children with additional learning needs (ALN). A significant number of children who have more severe and complex needs require a more specialist setting for their learning and well-being needs to be met.

The consultation will run from 2 December 2024 to 24 January 2025 to allow sufficient time for stakeholders to respond.

The School Organisation Code (2018) requires Local Authorities to carry out a Welsh Language Impact Assessment to give due consideration to the effects of proposals on the Welsh Language.

This document assesses the impact that the proposal may have on the community and forms part of a number of impact assessments including: the Welsh Language, Transport, Community, and an Integrated Impact Assessment which includes the Wellbeing of Future Generations and Equality. The assessment pulls together a range of relevant Welsh language data sources, statistics, information from Welsh Government and existing Council and Welsh Government policies and legislation. These must be considered in context and alongside mitigating factors as the Council determines whether to proceed with the outlined proposal.

Impact assessments are working documents which will be continuously updated in light of information and feedback from consultation with stakeholders and decisions taken by Elected Members.

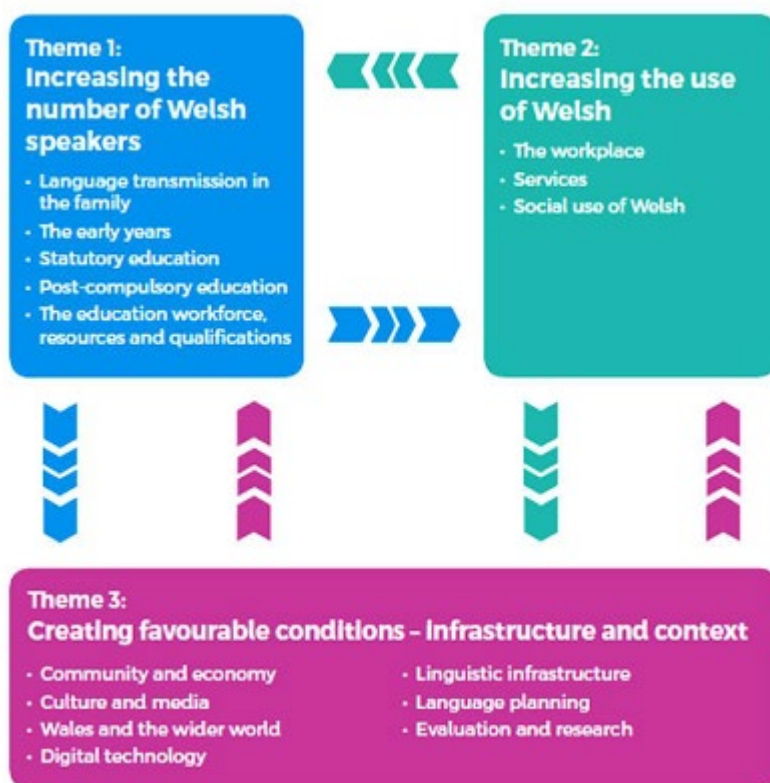
Cymraeg 2050 Strategy

Cymraeg 2050 is the Welsh Government's strategy for the promotion and facilitation of the use of the Welsh language. It sets out a long-term approach to achieving a target of one million Welsh speakers by 2050. The aim of the strategy is to reach a position where the Welsh language is an integral part of all aspects of everyday life. Wrexham Council's Welsh in Education Strategic Plan (2022-2031) (WESP) and Welsh Language Promotion Strategy (2022-2027) directly support the Welsh Government's vision and will become the cornerstone of the Council's contribution towards meeting the target outlined in the Welsh Government's strategy.

Wrexham's Council Plan (2020-2023) includes the Welsh Language and Culture as a strategic planning principle. It recognises that Wales has two official languages, Welsh and English, and services and information should be equally available in both. The Council's internal business language is English, but all employees are supported and encouraged to develop their Welsh language skills. Services and information that the

Council provides are available bilingually. The Council's 'Ensuring a Modern and Resilient Council' objective also reiterates our commitment to the Welsh Language Standards and ensures that we continue to adhere to its requirements.

This assessment includes the relevant requirements of a Welsh Language Assessment and considers the three main themes outlined in Cymraeg 2050: A Million Welsh Speakers. Some of the standard questions within the Welsh language assessment and two of the three themes of Cymraeg 2050 may not be directly relevant to this proposal due to the language medium and provision medium of the schools in question, but as there is a possibility that Welsh-medium schools in the area may be affected by the proposal, they will be considered in full.



As can be seen from the flow chart above, all three themes outlined in Cymraeg 2050 have the possibility of being relevant, as the proposal concerns English-medium primary schools which could potentially affect Welsh-medium schools in Wrexham. As a result, all schools that could be reasonably affected will be considered when referring to the impacts and mitigating factors associated with this proposal. The authority is also committed to raising the profile of the Welsh language and increasing participation in Welsh medium education in Wrexham. The proposal aligns with a number of objectives contained in the Council's Welsh in Education Strategic Plan (WESP), including:

- Increasing the number of pupils who receive their education through the medium of Welsh;
- Enabling children and young people to be able to use Welsh as a language for living;
- Enabling children and young people to develop confidence in bilingualism;

- Providing information and understanding of the advantages of being bilingual.
- Ensuring ALN provision through the medium of Welsh is equivalent to the provision available through the medium of English.
- Upskilling staff to be proficient in using Welsh within education settings.

The Proposal

The proposal is to change the status of Ysgol Cae'r Gwenyn from a mainstream nursery school to a primary special school and change the age range from 3-4 to 3-7. It is proposed that this change would take place with effect from September 2025.

Why is the Council proposing the changes?

The proposed changes would assist in addressing the increasing demand for assessment placements for children aged 3-7 with additional learning needs. Societal changes over recent years, largely exacerbated by but not solely due to the Covid-19 pandemic, have seen a significant delay in development in early year's children in the following areas:

- Speech, language and communication
- Social communication
- Physical delay (fine and gross motor skills)
- Emotional and social development
- Self-help skills (e.g. toileting)
- Cognitive development

Factors that have been considered by the Council in deciding to consult on this proposal include:

- The continued ability of the school to provide sufficient specialist places for children with additional learning needs.
- The provision of the most appropriate learning environment for children with complex and significant additional educational needs.
- Earlier intervention for children aged 3-7 means better long term life chances.

Welsh in Education Strategic Plan (WESP)

The vision: The year 2050: The Welsh language is thriving, the number of speakers has reached a million, and it is used in every aspect of life. Among those who do not speak Welsh there is goodwill and a sense of ownership towards the language and a recognition by all of its contribution to the culture, society and economy of Wales. Our vision is to secure favourable circumstances throughout the country that support language acquisition and use of Welsh language skills. We want to see an increase in language transmission in the family, early introduction of Welsh to every child and an education system that provides Welsh language skills for all.

Having recognised the appetite for Welsh medium education in Wrexham, we are exceptionally pleased at the progress we have made to date and commit to its further development during the coming 10 years.

WESP objective 6 focuses on Welsh medium provision for pupils with additional learning needs. It recognises the considerable changes which were rolled out in Wales from September 2021 in relation to the statutory provision required to meet the needs of learners with SEN or ALN.

The ALNET Act 2018 requires Local Authorities to keep the arrangements for supporting learners with SEN or ALN within their area under review and consider whether these arrangements are sufficient. The ALNET Act 2018 also includes a statutory requirement to take reasonable steps to create a Welsh medium and bilingual system of support for learners with SEN or ALN. Currently, there are 3 generic Resourced Provisions (RPs) within Wrexham;

- One Foundation Phase and one KS2 Resource Provision at Ysgol Bodhyfryd which has capacity for 8 and 11 learners respectively.
- One secondary Resource Provision at Ysgol Morgan Llwyd which has capacity for 16 learners.

Placements within these provisions are agreed by the Local Authority's Inclusion Moderation Panel.

An independent review of all the Local Authority's specialist provisions is being undertaken. The authority recognises that further development is required in order to enhance Welsh Medium provision within the Local Authority's specialist settings, such as the special school and the Pupil Referral Unit.

Wrexham County Borough Council recognises that it has an obligation to provide an equality of provision for learners with ALN in our Welsh medium schools. In addition to this, the Local Authority is committed to continuing to ensure that ALN provision within the Welsh medium sector matches the emerging need of learners and that there is increased capacity to support learners with ALN in Welsh medium schools by having more Welsh speaking staff in central teams, as well as within partner organisations. Current Welsh language resources need to be reviewed and the Local Authority will collaborate regionally and nationally to ensure that Wrexham schools and Wrexham learners access to have the resources they need.

The WESP 2022-31, is a vital part of the Council's vision for increasing and improving the planning of the provision of Welsh medium education in Wrexham County Borough Council, to enable all learners to develop their Welsh language skills and use the language confidently in everyday life. It both complements and assists in facilitating the National vision for the Welsh language, to have 1 million Welsh speakers by 2050.

Current Resourced Provisions in Wrexham

PRIMARY RESOURCED PROVISION

School	Type of Provision	Number on Roll	Estimated Maximum Capacity	Language Category	Age Range
Brymbo St Marys Vol Aided Primary	Resourced Provision Generic	9	11	EM	Foundation Phase/KS2
Ysgol Heulfan Gwersyllt (10 place Provision)	Resourced Provision SLD Social Communication	9	10	EM	Foundation Phase
Ysgol Heulfan Gwersyllt (Y Canol)	Resourced Provision Complex Needs (PMLD SLD)	26	25	EM	Foundation Phase /KS2
Ysgol Y Hafod, Johnstown	Resourced Provision Generic	9	11	EM	Foundation Phase /KS2
Park CP, Llay	Resourced Provision Generic	11	11	EM	KS2
Park CP, Llay (additional Provision)	Resourced Provision Generic	8	8	EM	Foundation Phase
The Rofft CP Marford	Resourced Provision Social Communication	22	22	EM	Foundation Phase /KS2
Rhosymedre CP	Resourced Provision Generic	10	11	EM	KS2
Rhosymedre CP (additional provision)	Resourced Provision BESD	8	8	EM	Foundation Phase /KS2
Acton Primary Foundation Phase Provision	Resourced Provision Speech and Language	6	10	EM	Foundation Phase

Acton Primary KS2 Provision	Resourced Provision Speech and Language	11	13	EM	KS2
Alexandra CP (8 place Foundation Phase Provision)	Resourced Provision Complex Needs SLD	8	8	EM	Foundation Phase
Alexandra C.P. (10 place Foundation Phase Provision)	Resourced Provision Social Communication	8	10	EM	Foundation Phase
Alexandra CP (11 place KS2 Provision)	Resourced Provision Social Communication	13	11	EM	KS2
Alexandra (Assessment Centre)	Resourced Provision Foundation Phase Assessment Provision	24	24	EM	Foundation Phase
St. Anne's RC VA Primary	Resourced Provision Generic	3	6	EM	Foundation Phase /KS2
Ysgol Bodhyfryd CP	Resourced Provision Generic	8	11	WM	KS2
Ysgol Bodhyfryd CP (additional 8 Foundation Phase Provision)	Resourced Provision Generic	3	8	WM	Foundation Phase
Gwenfro CP Foundation Phase Provision	Resourced Provision Generic	8	8	EM	Foundation Phase
Gwenfro CP KS2 Provision	Resourced Provision Generic	11	11	EM	KS2
Hafod-y-Wern CP	Resourced Provision Generic	10	11	EM	Foundation Phase /KS2
St Giles VC	Resourced Provision Generic	10	11	EM	KS2

Borras CP (Foundation Phase Provision)	Resourced Provision HI	7	8	EM	Foundation Phase
Borras CP (KS2 Provision)	Resourced Provision HI	9	8	EM	KS2

SECONDARY RESOURCED PROVISION

School	Type of Provision	Number on Roll	Estimated Maximum Capacity	Language Category	Age Range
Bryn Alyn	Resourced Provision Learning	11	15	EM	11-16
Maelor Penley	Resourced Provision SpLD	6	8	EM	11-18
Maelor Penley	Resourced Provision Social/Communication	7	8	EM	11-18
Ysgol y Grango	Resourced Provision Learning	9	12	EM	11-16
Darland (Dyslexia)	Resourced Provision SpLD	4	8	EM	11-16
Darland (Communication)	Resourced Provision Social/Communication	32	35	EM	11-16
Ysgol Rhiwabon	Resourced Provision Learning	17	8	EM	11-16
Morgan Llwyd	Resourced Provision Learning/Nurture	6	16	WM	11-18
St. Josephs	Resourced Provision Learning	15	20	EM	11-16
Rhosnesni (KS3 and 4)	Resourced Provision Learning	18	11	EM	11-16
Rhosnesni (KS3 and 4)	Resourced Provision Speech and Lang	11	18	EM	11-16
Rhosnesni (KS3 and 4)	Resourced Provision HI	4	6	EM	11-16
Clywedog	Resourced Provision Nurture	9	10	EM	11-16

Clywedog	Resourced Provision Learning	9	11	EM	11-16
-----------------	------------------------------	---	----	----	-------

ST. CHRISTOPHER'S

School	Type of Provision	Number on Roll	Estimated Maximum Capacity	Language Category	Age Range
St Christopher's	Special School Complex Needs	278	300	EM	4-19

The Consultation Process

The School Organisation Code 2018, paragraph. 1.4 states that “*Where proposals affect schools where Welsh is a medium of instruction (for subjects other than Welsh) for some or all of the time, local authorities should carry out a Welsh Language Impact Assessment.*” As there is the possibility that this could affect Welsh-medium schools in the area, a Welsh Language Impact Assessment must be produced.

Paragraph 3.4 in the School Organisation Code 2018 states:

WESP

- *The extent to which the proposal would support the targets in the approved Welsh in Education Strategic Plan.* This information is contained in the Impacts and Mitigations section.
- *How the proposal would expand or reduce Welsh language provision. In case of the latter, set out why provision will be reduced.* This information is contained in the Impacts and Mitigations section.

The consultation document invites views and opinions to be submitted in respect of the proposal. As part of the consultation process the Council will undertake a number of methods to seek views on the proposal, and to gather information on how consultees feel the proposal may impact on the Welsh language and its further development in the area. This includes an online survey available for adults and children, writing or emailing to the Council, completing the hard copy response proforma provided in the consultation booklets and / or attending one of the face to face or online drop-in sessions. The online survey and consultation response proforma asks a number of questions about the potential impact on the Welsh language. These questions (see Appendix E) have been developed in line with the Welsh Language Standards and in collaboration with the Welsh Language Commissioner. All information is available in English and Welsh and in languages other than English or Welsh upon request.

It is important that when bringing forward proposals, suitable arrangements are made to consult with pupils and, where possible, those pupils likely to attend the school. The Council firmly believe that the pupils of all the schools affected should be given the opportunity to make their views known about this proposal. A children and young people version of the consultation document and an online survey are made available to all children and young people who wish to participate in the consultation. In addition, a visit will be undertaken to meet with pupils at Ysgol Cae'r Gwenyn.

The Welsh Government's School Organisation Code requires the Council to consult on its proposal and to publish a consultation report summarising any issues raised by consultees, the Council's response to those issues and Estyn's view of the overall merit of the proposal.

The proposal and the consultation report will be considered by Elected Members of the Council and should it be agreed to proceed with the plans consulted upon, then the next stage of the process will be to publish a statutory notice outlining the proposal. This would be published for a period of 28 days during which written objections may be submitted.

Where objections are received, an objection report will be published summarising the objections and the Council's response to those objections. Elected Members of the Council will consider the proposal in light of objections received when taking a decision as to whether or not the proposal is to be implemented.

The list of consultees includes Welsh language partner organisations, including the Welsh in Education Forum and the local authority consulting with all of its schools including Welsh-medium schools. The Welsh Language Commissioner will also be consulted.

Welsh language impact assessments must consider a range of factors including links to legislation and details of supporting evidence and mitigating factors. This assessment brings together supporting evidence from a number of sources of information, from relevant Council policies and strategies to national regulations and Census data, and information from Welsh Government in order to support Wrexham County Borough Council as it decides on the proposals regarding Ysgol Cae'r Gwenyn.

By considering the above information on wider Welsh language matters, Wrexham County Borough Council will be able to evidence conscience consideration in the decision-making process. Section 84 of The School Standards and Organisation Act 2013 requires Local Authorities to prepare a Welsh in Education Strategic Plan (WESP). Wrexham's WESP (2022-2031) details the plan to support and further develop Welsh language education in schools.

Welsh-Medium Education Provision in Wrexham

There are currently eight Welsh-medium primary schools, one dual-stream primary school and one 11-18 secondary school which includes a sixth form provision, that provide Welsh-medium education within Wrexham City.

A high percentage of pupils currently attending Welsh medium schools in Wrexham come from predominantly English speaking homes. Bilingualism is introduced at the earliest opportunity and the Local Authority is committed to ensuring that Welsh-medium education will be maintained and developed as the child/young person progresses.

As outlined in the Council's WESP, "the further development and expansion of Welsh medium education remains our vision and we recognise the importance of creating opportunities for all Wrexham pupils to become bilingual so that they emerge from our education system, proud of their identity and confident in using both languages" (WESP, page 5). Over recent years, the Council has strived to expand Welsh medium education across the borough in order to ensure that there are enough places for the pupils of Wrexham to access Welsh medium education should they wish to do so.

Welsh Medium Education Projects - Background

Ysgol Plas Coch

In 2016, a £1 million modernisation scheme was implemented at the school, the aim to permanently increase the numbers of Welsh medium places from 210 to 315. An

extension to the school provides three new classrooms providing permanent spaces for learning to replace temporary accommodation.

Ysgol Bro Alun

In 2013, we opened a new 210 place Welsh medium school in Wrexham, Ysgol Bro Alun. This school was so successful in drawing pupils we have since expanded this site to accommodate 315 places as of September 2019. The project offered opportunity for continued growth, offered a greater choice to parents and met the desired increase in demographic spread of Welsh medium schools.

Ysgol ID Hooson

Alongside the successful expansion at Ysgol Bro Alun CP in Gwersyllt, the Council has also been successful in securing an outline funding bid, under the Welsh Government's Welsh Capital funding stream, to expand provision at Ysgol ID Hooson in Rhosllanerchrugog. Initially, this was for a two classroom extension to replace existing mobiles on site. Since this successful bid, the Council has, in support of the Welsh in Education Strategic Plan, requested additional capital funding to secure £6,300,000 to permanently extend the existing primary school building with an additional seven classrooms. The scheme would also allow for considerable alterations for example to accommodate a studio hall, a larger relocated kitchen and extension to the Foundation Phase areas. Welsh Government are providing 100% grant funding for this Capital grant. The extension will provide permanent spaces for learning to replace temporary accommodation and will temporarily house wrap around child care. This again creates further capacity and provides the opportunity for Ysgol ID Hooson to become a 420 capacity primary school if required.

Ysgol Llan Y Pwll

The Local Authority has increased the geographic spread of Welsh medium schools in the borough by opening a new Welsh medium school at the old Borrás Infants site. The project involved extending and extensively remodelling the previous Borrás Infants site in order to accommodate a new Welsh medium school with a capacity of 210 and a 30 place nursery. Funding was also secured through the Childcare grant and a new Childcare provision was created on site. By increasing the geographic spread of Welsh medium provision, the Council has ensured that Welsh medium education is increasingly accessible to parents and has also ensured that the time pupils need to travel to a local Welsh medium school is reduced. Ysgol Llan y Pwll opened in September 2022 for reception and nursery children. The aims of the above projects were:

- To continue to generate greater access and wider participation within Welsh medium at a Primary level for Wrexham learners.
- To continue increased participation and retention within the Welsh medium Primary sector.
- To address the demand for Welsh medium places in Wrexham.
- To increase the demographic spread of Welsh medium primary provision in Wrexham.
- To ensure increased efficiency and effectiveness to provide the best value for money.
- Supporting the Welsh Government's vision and strategy of a million Welsh speakers by 2050.

- Support the aims and objectives within Wrexham’s Welsh Language Promotion Strategy (2022-2027).

Secondary Welsh Medium Education

In terms of secondary Welsh medium education, the Local Authority operates a ‘Trochi’ Programme for late comers to Welsh medium secondary education. This programme enables pupils to receive intensive Welsh language support in Ysgol Morgan Llwyd; Wrexham’s Welsh-medium secondary school. The programme begins during the second half of the summer term, whilst the pupils are still in Year 6, and continues throughout Year 7. Based on the success of the Trochi Programme we are actively pursuing funding grants to build on these successes.

The Local Authority have also increased the available capacity at the Morgan Llwyd site by 240 places by creating a stand-alone sixth form provision under the Sustainable Communities for Learning Programme at a cost of £1,734,544. This work was completed in May 2019.

In the future, further consultation will be required to formally increase the admission number as required, utilising the space freed by the new sixth form provision.

Welsh Language Promotion Strategy

Under Welsh Language Standard 145 local authorities had to develop and implement 5 year promotion strategies, working with partner organisations to promote the Welsh language and to facilitate the use of the Welsh language more widely in their respective areas. Amongst other matters the strategy had to include the following:

- A target (in terms of the percentage of speakers in the area) for increasing or maintaining the number of Welsh speakers in the area by the end of the 5-year period concerned;
- A statement setting out how they intend to reach that target; and conduct a review of the strategy and publish a revised version on their website within 5 years of publishing a strategy (or of publishing a revised strategy).

Welsh-medium education, whether in the form of full Welsh-medium provision via Welsh schools, or the teaching of Welsh as a second language in English-medium schools, directly supports this aim and intrinsically links this strategy with the WESP.

Social Deprivation Considerations

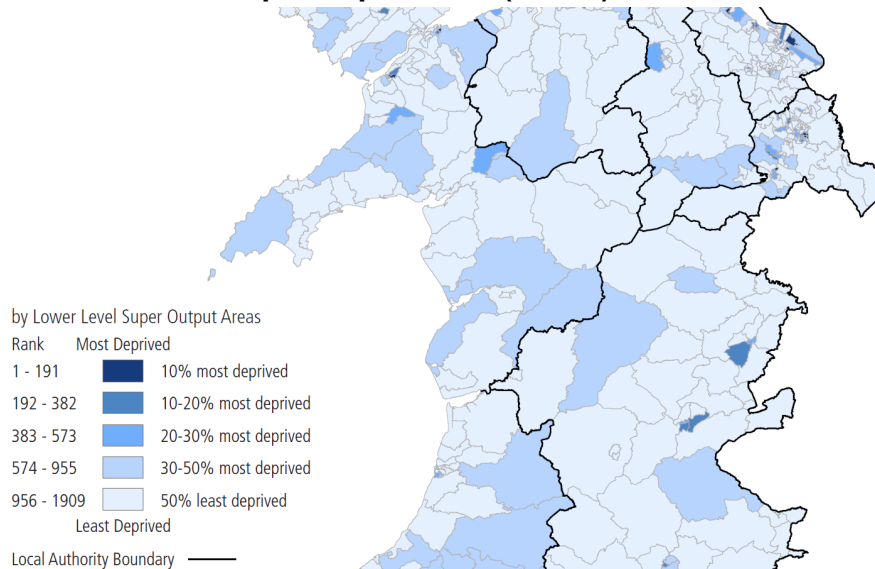
In the Welsh Index of Multiple Deprivation 2019 it was reported that Wrexham Local Authority contains 85 LSOAs (4.5% of the 1909 total LSOAs in Wales) Of the 0 - 10 % most deprived LSOAs in Wales within the overall domain: 6 are within the Wrexham Local Authority. Which accounts for 7.1% of those in the Local Authority and 0.3% of those in Wales. [WIMD - Wrexham \(gov.wales\)](https://gov.wales/wimd)

The proposal to reduce capacity at 3 English medium schools could have an positive impact on parental choice and access to Welsh medium education in terms of the

perceived positive opportunities that a potential place in a Welsh Language provision might offer their children.

There are both Welsh language and socio-economic considerations to consider. A number of possible mitigations to limit adverse impacts is outlined in the Impacts and Mitigations section.

Welsh Index of Multiple Deprivation (WIMD)



Source: Welsh Government November 2019

Welsh Language Skills in Wrexham (from Census 2021)

Welsh Language Skill	Percentage
Speak, read or write Welsh	14.5%
Understand spoken Welsh only	5.4%
Speak but cannot read or write Welsh	1.9%
Speak and read but cannot write Welsh	0.9%
Read but cannot speak or write Welsh	1.4%
Write but cannot speak or read Welsh	0.2%
Can read and write but cannot speak Welsh	0.6%
No skills in Welsh	80.1%

According to the 2021 Census, over half of the population of Wrexham were born in Wales (67.9%). 14.5% of people in Wrexham can speak, read or write Welsh. The ability to speak, read and write Welsh is at its highest in the rural ward of Rhosllanerchrugog and Johnstown South (23.1%) and is at its lowest in the rural ward of Bangor on Dee, Overton and Penley (9.4%). 12.2% of the population of Wrexham can speak Welsh compared to a Wales average of 17.8%.

Policy WL1: Welsh Language and the Social and Cultural Fabric of Communities

Within the Welsh Language Sensitive Areas identified on the Proposals Map (communities of Ceiriog Ucha, Coedpoeth, Glyntraian, Llansantffraid Glyn Ceiriog, Minera, Pen-y-cae and Rhosllanerchrugog) the following windfall developments will be subject to a Welsh Language Impact Assessment by WCBC. Where the Impact Assessment demonstrates that the development may have an adverse impact, proposals must be accompanied by a Welsh Language Action Plan setting out the measures to be taken to protect, promote and enhance the Welsh Language and culture:

1. All residential applications for 5 or more units in the Ceiriog Valley (Ceiriog Ucha, Glyntraian, Llansantffraid Glyn Ceiriog communities) and Minera community;

2. All residential applications for 15 or more units elsewhere within the Welsh Language Sensitive Areas.

The implementation of any measures identified within the Language Action Plan shall be secured either by planning conditions or, where necessary, by planning obligations.

Impacts and Mitigations

The following possible impacts have been identified in relation to this proposal:

Potential Impact	Negative/Positive	Mitigation	Comment / Impact on WESP Objective
-------------------------	--------------------------	-------------------	---

<p>Welsh speaking service users receive services to the same standard as those who access services through the medium of English.</p>	<p>Positive/Negative</p>	<p>This proposal links to WESP objective 6:</p> <p><i>An increase in the provision of Welsh-medium education for pupils with additional learning needs (ALN) (in accordance with the duties imposed by the Additional Learning Needs and Education Tribunal (Wales) Act 2018.</i></p> <p>Ysgol Cae'r Gwenyn has received positive comments from Estyn in its last 3 inspections in relation to the use of the Welsh language and Welsh culture at the school.</p> <p>Each pupil is assessed and where a need is identified, reasonable steps are made to ensure that pupils can access their education through the medium of Welsh. Nearly all pupils are non-verbal when they start at the school. Staff use Makaton signing using Welsh words and English words to support children's communications skills.</p> <p>The local authority recognises the need to address shortfalls in Welsh medium ALN provision and will continue to take reasonable steps to ensure that pupils</p>	<p>Links to WESP objective 6</p>
---	--------------------------	--	----------------------------------

Potential Impact	Negative/Positive	Mitigation	Comment / Impact on WESP Objective
		<p>are able to access special education through the medium of Welsh.</p> <p>The local authority is currently reviewing its resourced provision across schools. As part of this review, the authority is looking to increase the Welsh-medium offer so that more learners with specific needs can be supported in Wrexham.</p>	

<p>An increase in the number of Welsh speaking teaching staff could be required in Wrexham if more pupils chose Welsh medium places.</p>	<p>Positive</p>	<p>This proposal links to WESP objective 7:</p> <p><i>Increase the number of teaching staff able to teach Welsh (as a subject) and teach through the medium of Welsh.</i></p> <p>There are currently 2 fluent Welsh speakers at Ysgol Cae'r Gwenyn. Some of the Teaching Practitioners are fairly fluent Welsh speakers. Most staff have a basic Welsh vocabulary and use language prompts to help promote Welsh language in the classroom. All staff are very keen to improve their Welsh language skills and attend regular conversational Welsh sessions after school.</p> <p>A staff recruitment drive aims to recruit more Welsh speaking staff and ensure that learners with ALN have access to Welsh medium education.</p> <p>The opening of our new Trochi unit has provided the opportunity to use the immersion provision to upskill staff. Staff are accessing 'confidence building' training programmes at our primary language acquisition unit at Ysgol Min y Ddol. We intend to use the new Trochi unit at Ysgol Morgan Llwyd to expand this provision and upskill English medium</p>	<p>Links to WESP objective 7</p>
--	-----------------	--	----------------------------------

		<p>teachers in order to build their confidence and inspire them to transfer their enthusiasm to the learners, thus contributing to an interest in the language and possibly transferring to Welsh Medium.</p> <p>As a base to host Teaching workshops for school staff and / or teachers from other schools and / or the parents of our pupils, the Trochi provision has the opportunity to directly impact the core WESP aim of... “To improve provision in English medium schools in order to significantly raise standards of Welsh language and promote bilingualism”. It will also offer the opportunity for teachers from other schools to be supported in their use of Welsh and is in support of the council’s wider WESP outcome to “...Increase the number of teaching staff able to teach Welsh (as a subject) and teach through the medium of Welsh”.</p> <p>Cwrs CAMAU available to all early years practitioners. This is a free course to learn Welsh, designed for staff in Cylchoedd Meithrin, day nurseries and child minders. This is a self-study online course at Entry level (so it is suitable for</p>	
--	--	---	--

Potential Impact	Negative/Positive	Mitigation	Comment / Impact on WESP Objective
		<p>beginners and those who have attended Taster Courses).</p> <p>Sabbatical courses are available to non-Welsh speaking teaching and support staff. Teaching and support staff from across Wrexham access this opportunity for professional development each year.</p>	

Headteacher's Statement - How we promote the Welsh Language in Ysgol Cae'r Gwenyn

The Welsh Language is of the utmost importance to us here at Ysgol Cae'r Gwenyn. The Welsh language is incorporated into the daily lives of our children and is regarded as an essential part of their culture and heritage. We strive to promote and develop the Welsh language within the school and with all members of the school community.

The school was renamed Ysgol Cae'r Gwenyn in part to reflect the fact that we are a school in Wales and to celebrate our pride in the Welsh language. When the school was remodelled in 2012 and again in 2021, we ensured that internal and external signage was either just in Welsh or was bilingual, with the Welsh language appearing first. The three classes in the school are called Dosbarth Gwyddfif, Dosbarth Grug and Dosbarth Lafant. Posters and captions around the school are in Welsh and there are maps of Wales and the Welsh flag displayed in the foyers and corridors. Classroom displays etc are labelled bilingually. The wildflower meadow is called Llwybyr Gwenyn. When we celebrated the opening of our extension in 2021, we invited Iolo Williams, the Welsh speaking naturalist and presenter to officially open the new extension to our facilities.

In school, we have a range of Welsh books and resources that are used to promote and celebrate the Welsh language. We also offer support in helping our parents / carers to learn Welsh and send home Welsh vocabulary sheets to them on a regular basis.

We ensure that we always use Welsh to greet the children, say prayers at snack time and sing Welsh songs. Children have the opportunity to listen and dance to Welsh music both traditional and contemporary, participate in simple Dawnsio Gwerin dances, watch Welsh language clips and programmes and listen to Welsh stories being read to them. Staff use Makaton signing, together with English and Welsh words to support the children's communication skills.

In Ysgol Cae'r Gwenyn we always celebrate St David's Day and Welsh Language Music Day and ensure that photographs and video clips are placed on Instagram for our parents and the wider school community to celebrate. We hold an Eisteddfod every year and celebrate special events such as Welsh football and rugby matches together as a school.

I speak Welsh as does one of our class teachers. Some of our Teaching Practitioners are fairly fluent Welsh speakers. Most staff have a basic Welsh vocabulary and use language prompts to help promote Welsh language in the classroom. All staff are very keen to improve their Welsh language skills and attend regular conversational Welsh sessions after school.

Our last three Estyn Inspections have all highlighted Welsh as a strength in the school.

Estyn Inspection 2009

'Children's bilingual skills are promoted exceptionally well and are an outstanding feature of the school. The school ensures that children develop a good understanding of their cultural heritage through traditional Welsh tales. Staff make outstanding efforts to use incidental Welsh at all times.'

Estyn Inspection 2015

'The school provides good opportunities for the children to gain a sound understanding of Welsh. It promotes their knowledge and understanding of their heritage well. A high profile is being given to developing children's Welsh oracy skills.'

Estyn Inspection June 2023

'Staff make regular and effective use of the Welsh language during activities, using simple vocabulary that most pupils understand confidently. For example, they use simple instructions, such as asking the pupils to come over and see them, in Welsh.'

This exemplifies our positive and long standing approach to promoting and developing the Welsh language here in Ysgol Cae'r Gwenyn.

Mrs. Hughes

Pennaeth / Headteacher

Conclusion and Summary

The local authority recognises there is more work to be undertaken to actively promote Welsh medium education, address shortfalls in Welsh medium ALN provision and to upskill staff competency. We are confident that our work on these WESP objectives, staff recruitment strategy and the wider strategic ALN review will minimise and mitigate any potential impacts from the proposal as we continue to promote and raise the profile of Welsh medium education.