



Wrexham County Borough Council

Welsh Language Impact Assessment and Supporting Evidence

Prepared in accordance with Welsh Language Standards 88-92

This Welsh Language Impact Assessment underpins the Council's proposal to reduce the Published Admission Number (PAN) at Acton Park CP from 60 to 30, at Barker's Lane CP from 45 to 30 and at Wat's Dyke CP from 45 to 30.

August 2024

Introduction

Wrexham County Borough Council's School Organisation Framework (2017-2025) sets out the Council's vision and strategic direction for developments in education provision over a 10 year period.

At Executive Board on 12 November 2024, Wrexham County Borough Council will seek approval to carry out a formal consultation with stakeholders on a proposal to reduce the Published Admission Number (PAN) at Acton Park CP from 60 to 30, at Barker's Lane CP from 45 to 30 and at Wat's Dyke CP from 45 to 30. The proposal addresses the need to reduce the number of pupil places due to falling pupil numbers on roll at the schools concerned. This trend is projected to continue.

The consultation will run from 2 December 2024 to 24 January 2025 to allow sufficient time for stakeholders to respond.

The School Organisation Code (2018) requires Local Authorities to carry out a Welsh Language Impact Assessment to give due consideration to the effects of proposals on the Welsh Language.

This document assesses the impact that the proposal may have on the community and forms part of a number of impact assessments including: the Welsh Language, Transport, Community, and an Integrated Impact Assessment which includes the Wellbeing of Future Generations and Equality. The assessment pulls together a range of relevant Welsh language data sources, statistics, information from Welsh Government and existing Council and Welsh Government policies and legislation. These must be considered in context and alongside mitigating factors as the Council determines whether to proceed with the outlined proposal.

Impact assessments are working documents which will be continuously updated in light of information and feedback from consultation with stakeholders and decisions taken by Elected Members.

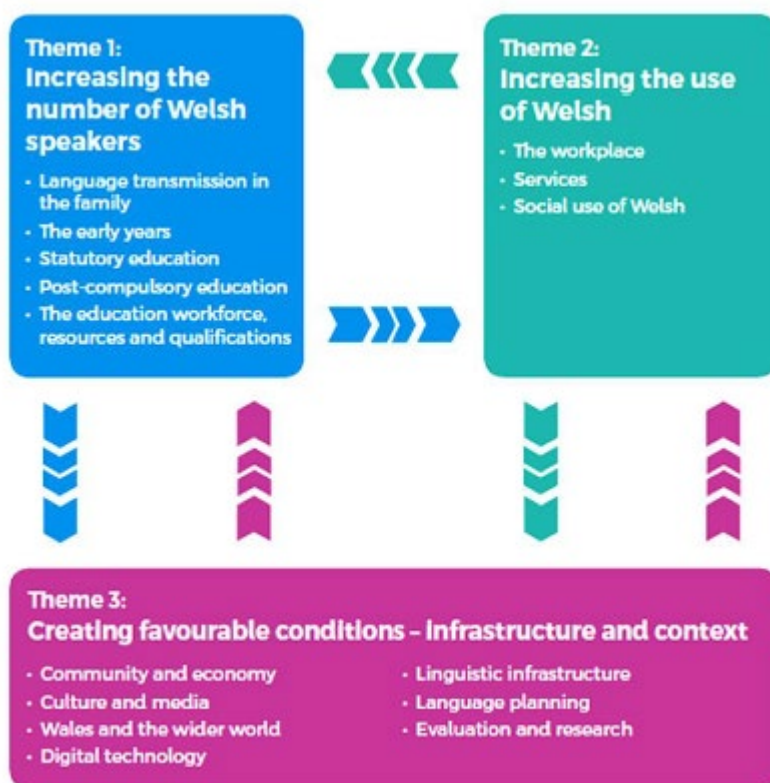
Cymraeg 2050 Strategy

Cymraeg 2050 is the Welsh Government's strategy for the promotion and facilitation of the use of the Welsh language. It sets out a long-term approach to achieving a target of one million Welsh speakers by 2050. The aim of the strategy is to reach a position where the Welsh language is an integral part of all aspects of everyday life. Wrexham Council's Welsh in Education Strategic Plan (2022-2031) (WESP) and Welsh Language Promotion Strategy (2022-2027) directly support the Welsh Government's vision and will become the cornerstone of the Council's contribution towards meeting the target outlined in the Welsh Government's strategy.

Wrexham's Council Plan (2020-2023) includes the Welsh Language and Culture as a strategic planning principle. It recognises that Wales has two official languages, Welsh and English, and services and information should be equally available in both. The Council's internal business language is English, but all employees are supported and encouraged to develop their Welsh language skills. Services and information that the Council provides are available bilingually.

The Council's 'Ensuring a Modern and Resilient Council' objective also reiterates our commitment to the Welsh Language Standards and ensures that we continue to adhere to its requirements.

This assessment includes the relevant requirements of a Welsh Language Assessment and considers the three main themes outlined in Cymraeg 2050: A Million Welsh Speakers. Some of the standard questions within the Welsh language assessment and two of the three themes of Cymraeg 2050 may not be directly relevant to this proposal due to the language medium and provision medium of the schools in question, but as there is a possibility that Welsh-medium schools in the area may be affected by the proposal, they will be considered in full.



As can be seen from the flow chart above, all three themes outlined in Cymraeg 2050 have the possibility of being relevant, as the proposal concerns English-medium primary schools which could potentially affect Welsh-medium schools in Wrexham. As a result, all schools that could be reasonably affected will be considered when referring to the impacts and mitigating factors associated with this proposal. The authority is also committed to raising the profile of the Welsh language and increasing participation in Welsh medium education in Wrexham. The proposal aligns with a number of objectives contained in the Council's Welsh in Education Strategic Plan (WESP), including:

- Increasing the number of pupils who receive their education through the medium of Welsh;
- Enabling children and young people to be able to use Welsh as a language for living;\
- Enabling children and young people to develop confidence in bilingualism;

- Providing information and understanding of the advantages of being bilingual.
- Ensuring ALN provision through the medium of Welsh is equivalent to the provision available through the medium of English.
- Upskilling staff to be proficient in using Welsh within education settings.

The Proposal

The proposal is to reduce the Published Admission Number (PAN) at Acton Park CP, Wat's Dyke CP and Barker's Lane CP. This would reduce the number of English medium primary school places by a total of 60 places. It is proposed that the reduction in PAN at all 3 schools will be implemented with effect from September 2026 for Nursery and Reception pupils.

Why is the Council proposing the changes?

The proposed changes would assist in:

- Addressing the issue of reducing pupil numbers at the 3 schools concerned.
- Reducing the Council's overall surplus capacity in Wrexham's primary schools.
- Providing an appropriate solution to meet local demand for school places in the areas where the schools are located.
- Limiting the impact on all schools, both locally and across the county.
- Supporting the sustainable growth of Welsh-medium education in line with the aspirations of the Council's Welsh in Education Strategic Plan and Cymraeg 2050.
- Improving standards of education and in the longer term be to the benefit of all pupils in the area.

Factors that have been considered by the Council in deciding to consult on this proposal include:

- The continued ability of the schools to provide sufficient places for local children.
- The provision of the most appropriate learning environment for all pupils in support of continuing school improvement.
- Future resource planning and management.

The Consultation Process

The School Organisation Code 2018, paragraph. 1.4 states that "*Where proposals affect schools where Welsh is a medium of instruction (for subjects other than Welsh) for some or all of the time, local authorities should carry out a Welsh Language Impact Assessment.*" As there is the possibility that this could affect Welsh-medium schools in the area, a Welsh Language Impact Assessment must be produced.

Paragraph 3.4 in the School Organisation Code 2018 states:

WESP

- *The extent to which the proposal would support the targets in the approved Welsh in Education Strategic Plan.* This information is contained in the Impacts and Mitigations section.
- *How the proposal would expand or reduce Welsh language provision. In case of the latter, set out why provision will be reduced.* This information is contained in the Impacts and Mitigations section.

The consultation document invites views and opinions to be submitted in respect of the proposal. As part of the consultation process the Council will undertake a number of methods to seek views on the proposal, and to gather information on how consultees feel the proposal may impact on the Welsh language and its further development in the area. This includes an online survey available for adults and children, writing or emailing to the Council, completing the hard copy response proforma provided in the consultation booklets and / or attending one of the face to face or online drop-in sessions. The online survey and consultation response proforma asks a number of questions about the potential impact on the Welsh language. These questions (see Appendix E) have been developed in line with the Welsh Language Standards and in collaboration with the Welsh Language Commissioner. All information is available in English and Welsh and in languages other than English or Welsh upon request.

It is important that when bringing forward proposals, suitable arrangements are made to consult with pupils and, where possible, those pupils likely to attend the school. The Council firmly believe that the pupils of all the schools affected should be given the opportunity to make their views known about this proposal. A children and young people version of the consultation document and an online survey are made available to all children and young people who wish to participate in the consultation. In addition, a visit will be undertaken to meet with the School Council at Acton Park CP, Wat's Dyke CP and Barker's Lane CP.

The Welsh Government's School Organisation Code requires the Council to consult on its proposal and to publish a consultation report summarising any issues raised by consultees, the Council's response to those issues and Estyn's view of the overall merit of the proposal.

The proposal and the consultation report will be considered by Elected Members of the Council and should it be agreed to proceed with the plans consulted upon, then the next stage of the process will be to publish a statutory notice outlining the proposal. This would be published for a period of 28 days during which written objections may be submitted.

Where objections are received, an objection report will be published summarising the objections and the Council's response to those objections. Elected Members of the Council will consider the proposal in light of objections received when taking a decision as to whether or not the proposal is to be implemented.

The list of consultees includes Welsh language partner organisations, including the Welsh in Education Forum and the local authority consulting with all of its schools

including Welsh-medium schools. The Welsh Language Commissioner will also be consulted.

Welsh language impact assessments must consider a range of factors including links to legislation and details of supporting evidence and mitigating factors. This assessment brings together supporting evidence from a number of sources of information, from relevant Council policies and strategies to national regulations and Census data, and information from Welsh Government in order to support Wrexham County Borough Council as it decides on the proposals regarding Acton Park CP, Wat's Dyke CP and Barker's Lane CP.

By considering the above information on wider Welsh language matters, Wrexham County Borough Council will be able to evidence conscience consideration in the decision-making process. Section 84 of The School Standards and Organisation Act 2013 requires Local Authorities to prepare a Welsh in Education Strategic Plan (WESP). Wrexham's WESP (2022-2031) details the plan to support and further develop Welsh language education in schools.

Welsh-Medium Education Provision in Wrexham

There are currently eight Welsh-medium primary schools, one dual-stream primary school and one 11-18 secondary school which includes a sixth form provision, that provide Welsh-medium education within Wrexham City.

A high percentage of pupils currently attending Welsh medium schools in Wrexham come from predominantly English speaking homes. Bilingualism is introduced at the earliest opportunity and the Local Authority is committed to ensuring that Welsh-medium education will be maintained and developed as the child/young person progresses.

As outlined in the Council's WESP, "the further development and expansion of Welsh medium education remains our vision and we recognise the importance of creating opportunities for all Wrexham pupils to become bilingual so that they emerge from our education system, proud of their identity and confident in using both languages" (WESP, page 5). Over recent years, the Council has strived to expand Welsh medium education across the borough in order to ensure that there are enough places for the pupils of Wrexham to access Welsh medium education should they wish to do so.

Pupil Projections and Surplus Places in Welsh-Medium Schools

The table below shows the pupil projections and the number of surplus places available in Welsh-medium primary schools across the County Borough over the next five years.

Name of School	Distance from Acton CP	Distance from Wat's Dyke	Distance from Barker's Lane
Ysgol Llan y Pwll	1.005	1.452	0.784
Ysgol Plas Coch CP	1.212	0.844	1.702
Ysgol Bodhyfryd	2.206	2.261	2.770
Ysgol Bro Alun CP	2.238	1.708	2.132

Name of School	Distance from Acton CP	Distance from Wat's Dyke	Distance from Barker's Lane
Ysgol Bryn Tabor	4.208	3.839	4.697
Ysgol ID Hooson	5.646	5.591	6.211
Ysgol Min Y Ddol	8.119	8.067	8.685
Ysgol Cynddelw	14.820	14.767	15.385
Ysgol Llanarmon Dyffryn Ceiriog	19.787	19.735	20.352

School Name	Year	Pupil Projections (Full Time Pupils only)	Surplus Places
Ysgol Bro Alun CP	2025/2026	251	64
Ysgol Bro Alun CP	2026/2027	244	71
Ysgol Bro Alun CP	2027/2028	251	64
Ysgol Bro Alun CP	2028/2029	251	64

School Name	Year	Pupil Projections (Full Time Pupils only)	Surplus Places
Ysgol Bryn Tabor	2025/2026	179	136
Ysgol Bryn Tabor	2026/2027	168	147
Ysgol Bryn Tabor	2027/2028	161	154
Ysgol Bryn Tabor	2028/2029	161	154

School Name	Year	Pupil Projections (Full Time Pupils only)	Surplus Places
Ysgol Plas Coch	2025/2026	267	48
Ysgol Plas Coch	2026/2027	270	45
Ysgol Plas Coch	2027/2028	280	35

School Name	Year	Pupil Projections (Full Time Pupils only)	Surplus Places
Ysgol Plas Coch	2028/2029	275	40

School Name	Year	Pupil Projections (Full Time Pupils only minus special class)	Surplus Places
Ysgol Bodhyfryd	2025/2026	214	206
Ysgol Bodhyfryd	2026/2027	212	208
Ysgol Bodhyfryd	2027/2028	205	215
Ysgol Bodhyfryd	2028/2029	192	228

School Name	Year	Pupil Projections (Full Time Pupils only)	Surplus Places
Ysgol ID Hooson	2025/2026	192	123
Ysgol ID Hooson	2026/2027	189	125
Ysgol ID Hooson	2027/2028	190	125
Ysgol ID Hooson	2028/2029	193	122

School Name	Year	Pupil Projections (Full Time Pupils only)	Surplus Places
Ysgol Min Y Ddol	2025/2026	107	33
Ysgol Min Y Ddol	2026/2027	115	25
Ysgol Min Y Ddol	2027/2028	121	19

School Name	Year	Pupil Projections (Full Time Pupils only)	Surplus Places
Ysgol Min Y Ddol	2028/2029	120	20

School Name	Year	Pupil Projections (Full Time Pupils only)	Surplus Places
Ysgol Cynddelw	2025/2026	68	58
Ysgol Cynddelw	2026/2027	72	54
Ysgol Cynddelw	2027/2028	74	52
Ysgol Cynddelw	2028/2029	73	53

School Name	Year	Pupil Projections (Full Time Pupils only)	Surplus Places
Ysgol Llanarmon Dyffryn Ceiriog	2025/2026	20	29
Ysgol Llanarmon Dyffryn Ceiriog	2026/2027	18	31
Ysgol Llanarmon Dyffryn Ceiriog	2027/2028	16	33
Ysgol Llanarmon Dyffryn Ceiriog	2028/2029	16	33

**Please note that pupil projections and surplus places are not currently available for Ysgol Llan Y Pwll; the new Welsh medium school which has recently opened on the old Borrass Infants site.*

Based on projections, all of these schools have a number of surplus places for the parents of city centre schools wishing to access Welsh medium education should they wish to do so over the next five years. In line with the Council's transport policy, free school transport would also be provided to pupils who wish to access Welsh medium education if they meet the distance criteria. In order to qualify for free home to school transport, a child would need to be accessing Welsh medium education in the nearest suitable Welsh medium school to their home address and this would need to be 2 miles away or more. Distances are measured using the Council's GIS mapping system.

In addition, there are a number of projected surplus places in Welsh medium schools across the borough as a whole which parents could access if they wanted to. In line with recommendations in the WESP 2022-2031, the “emphasis will be on filling the places we already have within the system” (page 35) before focusing on expanding Welsh-medium education further.

Welsh Medium Education Projects - Background

Ysgol Plas Coch

In 2016, a £1 million modernisation scheme was implemented at the school, the aim to permanently increase the numbers of Welsh medium places from 210 to 315. An extension to the school provides three new classrooms providing permanent spaces for learning to replace temporary accommodation.

Ysgol Bro Alun

In 2013, we opened a new 210 place Welsh medium school in Wrexham, Ysgol Bro Alun. This school was so successful in drawing pupils we have since expanded this site to accommodate 315 places as of September 2019. The project offered opportunity for continued growth, offered a greater choice to parents and met the desired increase in demographic spread of Welsh medium schools.

Ysgol ID Hooson

Alongside the successful expansion at Ysgol Bro Alun CP in Gwersyllt, the Council has also been successful in securing an outline funding bid, under the Welsh Government’s Welsh Capital funding stream, to expand provision at Ysgol ID Hooson in Rhosllanerchrugog. Initially, this was for a two classroom extension to replace existing mobiles on site. Since this successful bid, the Council has, in support of the Welsh in Education Strategic Plan, requested additional capital funding to secure £6,300,000 to permanently extend the existing primary school building with an additional seven classrooms. The scheme would also allow for considerable alterations for example to accommodate a studio hall, a larger relocated kitchen and extension to the Foundation Phase areas. Welsh Government are providing 100% grant funding for this Capital grant. The extension will provide permanent spaces for learning to replace temporary accommodation and will temporarily house wrap around child care. This again creates further capacity and provides the opportunity for Ysgol ID Hooson to become a 420 capacity primary school if required.

Ysgol Llan Y Pwll

The Local Authority has increased the geographic spread of Welsh medium schools in the borough by opening a new Welsh medium school at the old Borrás Infants site. The project involved extending and extensively remodelling the previous Borrás Infants site in order to accommodate a new Welsh medium school with a capacity of 210 and a 30 place nursery. Funding was also secured through the Childcare grant and a new Childcare provision was created on site. By increasing the geographic spread of Welsh medium provision, the Council has ensured that Welsh medium education is increasingly accessible to parents and has also ensured that the time pupils need to travel to a local Welsh medium school is reduced. Ysgol Llan y Pwll opened in September 2022 for reception and nursery children. The aims of the above projects were:

- To continue to generate greater access and wider participation within Welsh medium at a Primary level for Wrexham learners.
- To continue increased participation and retention within the Welsh medium Primary sector.
- To address the demand for Welsh medium places in Wrexham.
- To increase the demographic spread of Welsh medium primary provision in Wrexham.
- To ensure increased efficiency and effectiveness to provide the best value for money.
- Supporting the Welsh Government's vision and strategy of a million Welsh speakers by 2050.
- Support the aims and objectives within Wrexham's Welsh Language Promotion Strategy (2022-2027).

Secondary Welsh Medium Education

In terms of secondary Welsh medium education, the Local Authority operates a 'Trochi' Programme for late comers to Welsh medium secondary education. This programme enables pupils to receive intensive Welsh language support in Ysgol Morgan Llwyd; Wrexham's Welsh-medium secondary school. The programme begins during the second half of the summer term, whilst the pupils are still in Year 6, and continues throughout Year 7. Based on the success of the Trochi Programme we are actively pursuing funding grants to build on these successes.

The Local Authority have also increased the available capacity at the Morgan Llwyd site by 240 places by creating a stand-alone sixth form provision under the Sustainable Communities for Learning Programme at a cost of £1,734,544. This work was completed in May 2019.

In the future, further consultation will be required to formally increase the admission number as required, utilising the space freed by the new sixth form provision.

Welsh in Education Strategic Plan (WESP)

The vision: The year 2050: The Welsh language is thriving, the number of speakers has reached a million, and it is used in every aspect of life. Among those who do not speak Welsh there is goodwill and a sense of ownership towards the language and a recognition by all of its contribution to the culture, society and economy of Wales. Our vision is to secure favourable circumstances throughout the country that support language acquisition and use of Welsh language skills. We want to see an increase in language transmission in the family, early introduction of Welsh to every child and an education system that provides Welsh language skills for all.

Having recognised the appetite for Welsh medium education in Wrexham, we are exceptionally pleased at the progress we have made to date and commit to its further development during the coming 10 years.

Wrexham Council have been very successful in meeting demand for Welsh medium school places and indeed have grown considerably prior to and across the lifetime of the previous WESP. In 2013, we opened a new 210 place Welsh medium school Ysgol

Bro Alun, this school was so successful in drawing pupils we have since expanded the provision at this site to accommodate 315 pupil places.

In addition, we have expanded provision across a number of Welsh medium schools where the sites allowed. Since 2019, we have increased capacity in primary by 165 places or 8.7%.

The WESP 2022-31, is a vital part of the Council's vision for increasing and improving the planning of the provision of Welsh medium education in Wrexham County Borough Council, to enable all learners to develop their Welsh language skills and use the language confidently in everyday life. It both complements and assists in facilitating the National vision for the Welsh language, to have 1 million Welsh speakers by 2050.

Welsh Language Promotion Strategy

Under Welsh Language Standard 145 local authorities had to develop and implement 5 year promotion strategies, working with partner organisations to promote the Welsh language and to facilitate the use of the Welsh language more widely in their respective areas. Amongst other matters the strategy had to include the following:

- A target (in terms of the percentage of speakers in the area) for increasing or maintaining the number of Welsh speakers in the area by the end of the 5-year period concerned;
- A statement setting out how they intend to reach that target; and conduct a review of the strategy and publish a revised version on their website within 5 years of publishing a strategy (or of publishing a revised strategy).

Welsh-medium education, whether in the form of full Welsh-medium provision via Welsh schools, or the teaching of Welsh as a second language in English-medium schools, directly supports this aim and intrinsically links this strategy with the WESP.

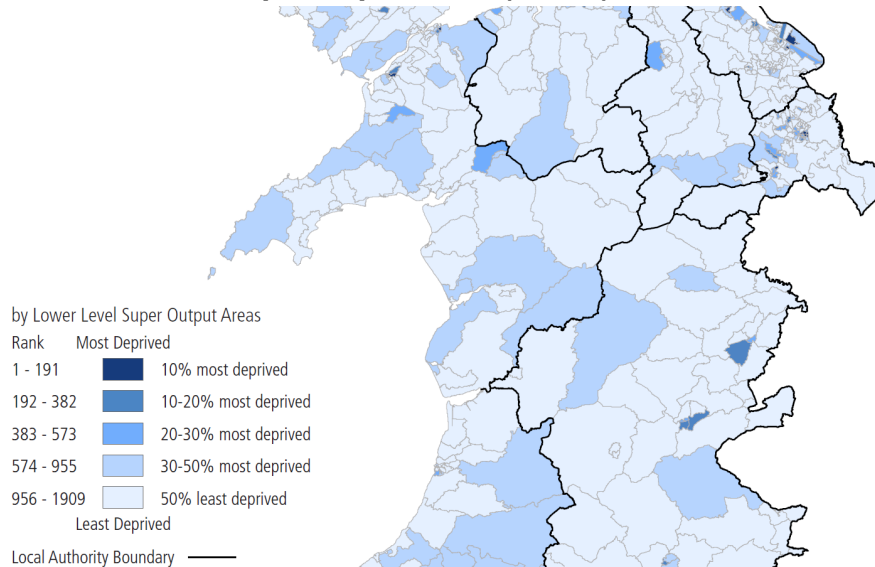
Social Deprivation Considerations

In the Welsh Index of Multiple Deprivation 2019 it was reported that Wrexham Local Authority contains 85 LSOAs (4.5% of the 1909 total LSOAs in Wales) Of the 0 - 10 % most deprived LSOAs in Wales within the overall domain: 6 are within the Wrexham Local Authority. Which accounts for 7.1% of those in the Local Authority and 0.3% of those in Wales. [WIMD - Wrexham \(gov.wales\)](https://gov.wales/wimd)

The proposal to reduce capacity at 3 English medium schools could have an positive impact on parental choice and access to Welsh medium education in terms of the perceived positive opportunities that a potential place in a Welsh Language provision might offer their children.

There are both Welsh language and socio-economic considerations to consider. A number of possible mitigations to limit adverse impacts is outlined in the Impacts and Mitigations section.

Welsh Index of Multiple Deprivation (WIMD)



Source: Welsh Government November 2019

Welsh Language Skills in Wrexham (from Census 2021)

Welsh Language Skill	Percentage
Speak, read or write Welsh	14.5%
Understand spoken Welsh only	5.4%
Speak but cannot read or write Welsh	1.9%
Speak and read but cannot write Welsh	0.9%
Read but cannot speak or write Welsh	1.4%
Write but cannot speak or read Welsh	0.2%
Can read and write but cannot speak Welsh	0.6%
No skills in Welsh	80.1%

According to the 2021 Census, over half of the population of Wrexham were born in Wales (67.9%). 14.5% of people in Wrexham can speak, read or write Welsh. The ability to speak, read and write Welsh is at its highest in the rural ward of Rhosllanerchrugog and Johnstown South (23.1%) and is at its lowest in the rural ward of Bangor on Dee, Overton and Penley (9.4%). 12.2% of the population of Wrexham can speak Welsh compared to a Wales average of 17.8%.

Policy WL1: Welsh Language and the Social and Cultural Fabric of Communities

Within the Welsh Language Sensitive Areas identified on the Proposals Map (communities of Ceiriog Ucha, Coedpoeth, Glyntraian, Llansantffraid Glyn Ceiriog, Minera, Pen-y-cae and Rhosllanerchrugog) the following windfall developments will be subject to a Welsh Language Impact Assessment by WCBC. Where the Impact

Assessment demonstrates that the development may have an adverse impact, proposals must be accompanied by a Welsh Language Action Plan setting out the measures to be taken to protect, promote and enhance the Welsh Language and culture:

- i. All residential applications for 5 or more units in the Ceiriog Valley (Ceiriog Ucha, Glyntraian, Llansantffraid Glyn Ceiriog communities) and Minera community;
- ii. All residential applications for 15 or more units elsewhere within the Welsh Language Sensitive Areas.

The implementation of any measures identified within the Language Action Plan shall be secured either by planning conditions or, where necessary, by planning obligations.

Impacts and Mitigations

The following possible impacts have been identified in relation to this proposal:

Potential Impact	Negative/Positive	Mitigation	Comment / Impact on WESP Objective
-------------------------	--------------------------	-------------------	---

<p>Pupil numbers may increase in Welsh-medium schools due to reduced capacity at Acton Park CP, Wat's Dyke CP and Barker's Lane CP Schools.</p>	<p>Positive</p>	<p>This proposal could have a potential positive impact on WESP objectives 1 and 2:</p> <p><i>More nursery children/ three year olds receive their education through the medium of Welsh.</i></p> <p><i>More reception class children/ five year olds receive their education through the medium of Welsh.</i></p> <p>The local authority has proactively created a programme of events and promotional materials to promote the Welsh medium offer of school places and will continue to raise awareness regarding the Welsh medium provision available to them.</p> <p>Significant investment in Welsh medium education provision in Wrexham, including new and refurbished buildings, we are now in the position where 100% first preference admission places have been met in Welsh-medium education.</p> <p>The Welsh language immersion offer provides a 'taster course' during the Summer term of Year 6 so that learners from English medium provisions can decide whether to transfer to a Welsh Medium secondary school. From September 2023 we have offered 'trochi' sessions for all English medium schools. There has been a growing demand for the Trochi provision with increasing numbers of pupils accessing their education through the medium of Welsh. This proposal could</p>	<p>Links to WESP objectives 1 and 2</p>
---	-----------------	--	---

Potential Impact	Negative/Positive	Mitigation	Comment / Impact on WESP Objective
		<p>potentially support the positive progress made to date and expand demand for Welsh medium education due to a reduction of English medium pupil places.</p> <p>The Trochi provision has grown as follows during the past 4 years 2021/22 (under Ysgol Morgan Llwyd) - 3 learners, 2022/23 (under LA) - 17 learners, 2023/24 - 24 learners, 2024/25 – 32 learners. We are projecting the number of learners to grow yet again for the 2025/26 academic year.</p>	

<p>An increase in the number of Welsh speaking teaching staff could be required in Wrexham if more pupils chose Welsh medium places.</p>	<p>Positive</p>	<p>The proposal could potentially have a positive impact on WESP objective 7:</p> <p><i>Increase the number of teaching staff able to teach Welsh (as a subject) and teach through the medium of Welsh.</i></p> <p>A reduction of English medium primary place may mean that more pupils opt for Welsh medium education. This would require an increase in the number of Welsh speaking staff within Welsh medium schools.</p> <p>The opening of our new Trochi unit has provided the opportunity to use the immersion provision to upskill staff. Staff are accessing 'confidence building' training programmes at our primary language acquisition unit at Ysgol Min y Ddol. We intend to use the new Trochi unit at Ysgol Morgan Llwyd to expand this provision and upskill English medium teachers in order to build their confidence and inspire them to transfer their enthusiasm to the learners, thus contributing to an interest in the language and possibly transferring to Welsh Medium.</p> <p>The addition of a permanent base in 2025 for the provision will allow the service to see through its long term strategy for development and continue to contribute to the Cymraeg 2050 targets.</p>	<p>Links to WESP objective 7</p>
--	-----------------	---	----------------------------------

Potential Impact	Negative/Positive	Mitigation	Comment / Impact on WESP Objective
		<p>Cwrs CAMAU available to all early years practitioners. This is a free course to learn Welsh, designed for staff in Cylchoedd Meithrin, day nurseries and child minders. This is a self-study online course at Entry level (so it is suitable for beginners and those who have attended Taster Courses).</p> <p>Sabbatical courses are available to non-Welsh speaking teaching and support staff. Teaching and support staff from across Wrexham access this opportunity for professional development each year.</p>	

Conclusion and Summary

We are confident that our work on these WESP objectives and the outcomes of this proposal will assist in continuing to promote and raise the profile of Welsh medium education. We do not foresee any significant adverse impact as a result of this proposal to reduce pupil places in three of our English medium primary schools and have identified potential positive impacts on the Welsh language and/or on Welsh medium education.