

How to connect to your home WiFi

Navigate to your wireless network settings.



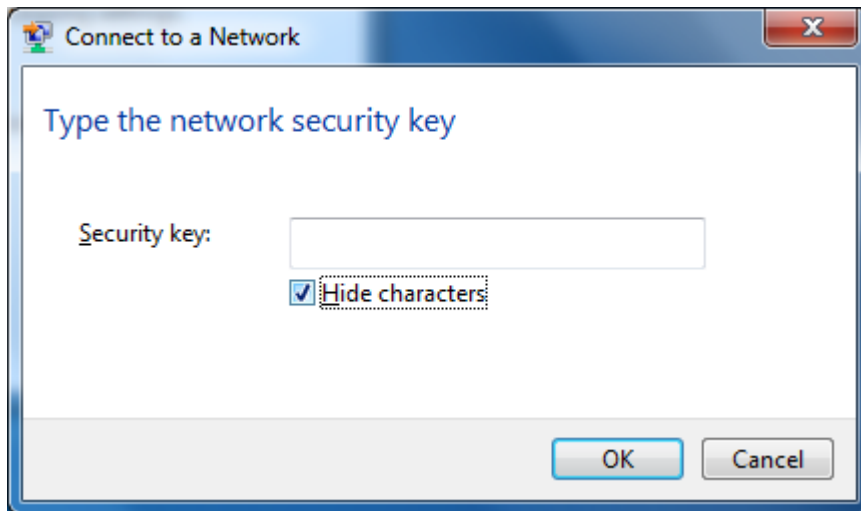
A list of wireless networks should now be displayed.



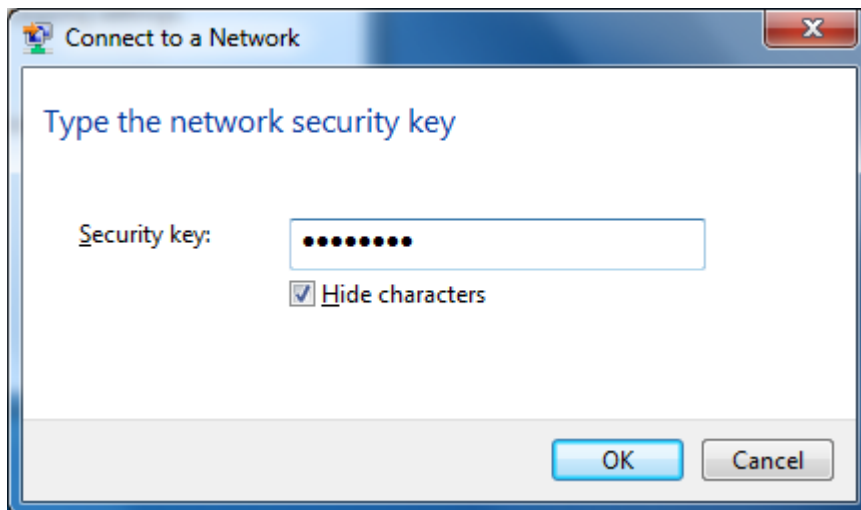
Navigate to your chosen network. In this case, the wireless network was called Home Network. If you are at home, the network name is usually displayed on your router.



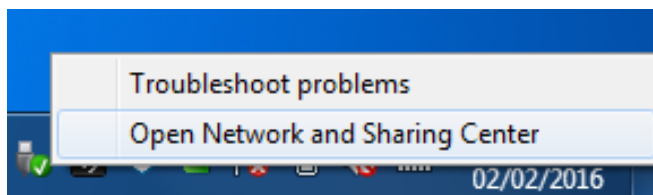
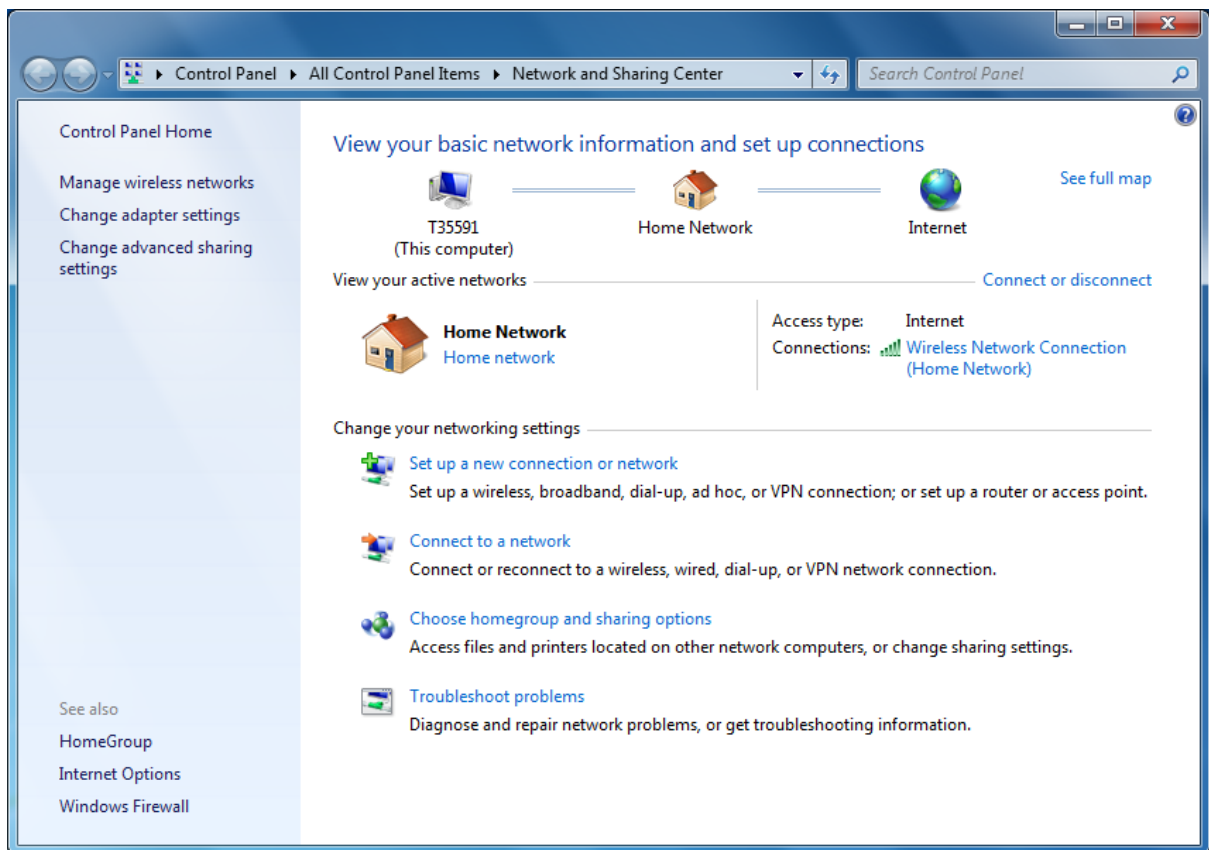
Select **Connect**.



If your wireless network has security enabled, it would require a password to connect. If you are at home then this is normally located on your router.



Once you have entered your password, select **OK** to continue.

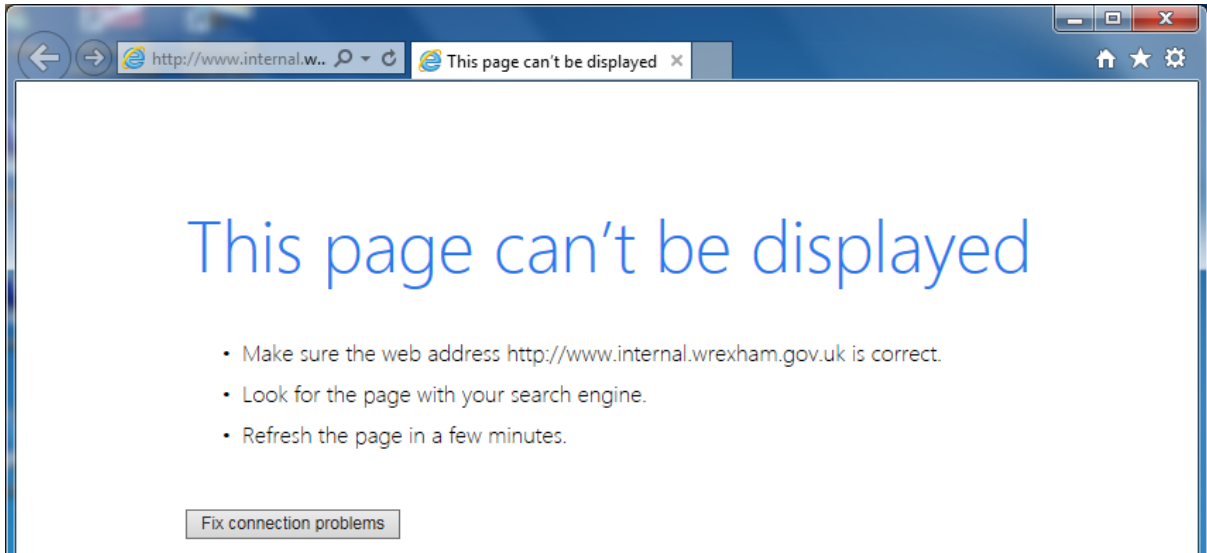


If you need to check your network settings, you can do this by going to the Network and Sharing Center by right clicking your wireless settings and selecting **Open Network and Sharing Center**.

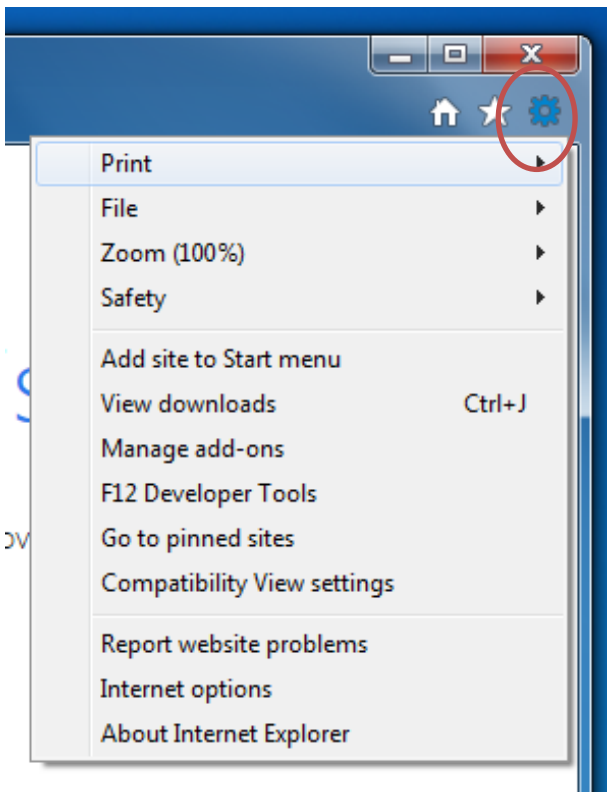
Once connected, you will need to disable your proxy for internet access. Select **Internet Explorer**.



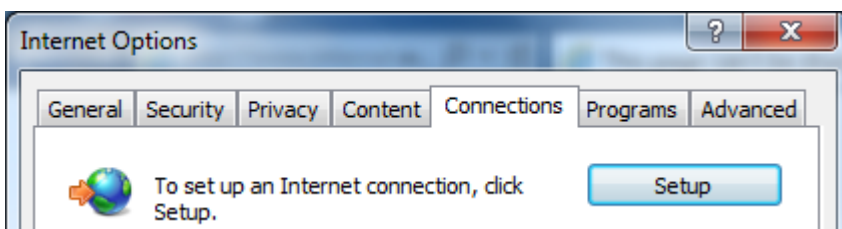
You may be displayed with **This page can't be displayed** when Internet Explorer is open. This is due to your Proxy being on.

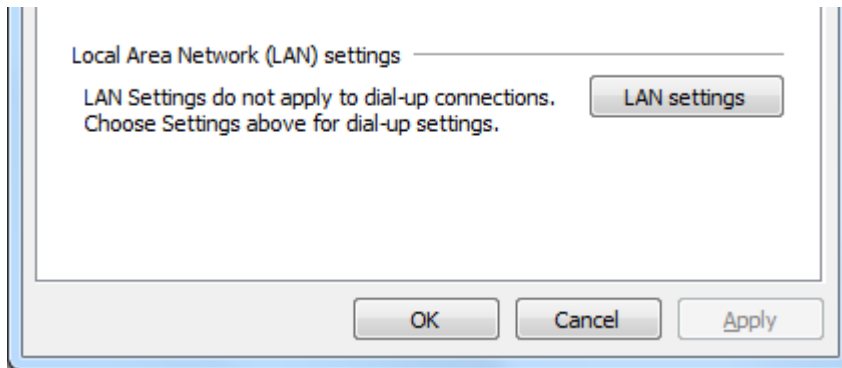


Select **Tools** (the cog in the top right corner) then **Internet options** (second from the bottom).

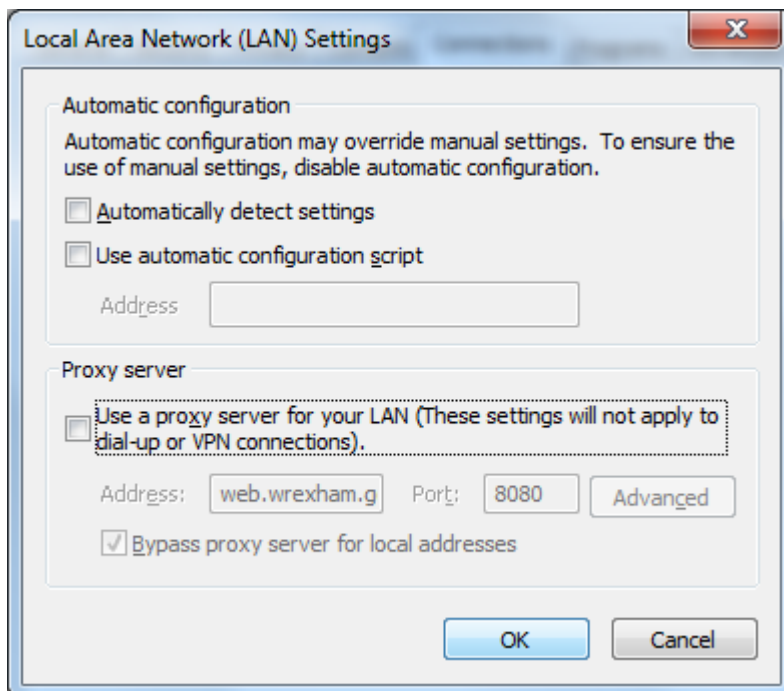


Select **Connections** (5th tab across) and then **LAN settings**.





Under Proxy server, you will see **Use a proxy server for your LAN** which will be ticked. Please untick this box (which will grey out the **Bypass proxy server for local addresses** box).



Select **OK** and restart Internet Explorer for the changes to be made.

You should now have internet access.